

Technical description

Our photovoltaic canopy is a **metal structure** designed to be installed on a variety of sites, especially car **parks**. Its purpose is cost-effectiveness by maximising the collection of solar energy for photovoltaic systems.

Thanks to its **easy installation**, it can be fixed by means of anchors to concrete foundations or ballast. It adjusts to the specific needs of each project in terms of dimensions, orientation of the **solar panels**, as well as the scale and capacity of the installation.

Its flexibility and **integration capabilities** make it suitable for both residential and commercial applications. It can be installed independently or in modules.

Technical data

FOUNDATION AND ANCHORING

Solution with anchoring to foundations without the need for an embedded plate. Requires little volume of concrete: 1.89m³ per isolated footing (possibility of foundation with continuous footing). Direct bolted anchoring with maximum performance in concrete.

INSTALLATION OF FV MODULES

Easy and quick mechanical assembly of PV panels (compatible with all types of PV panels).

WIND AND SNOW RESISTANCE

Up to 125km/h and 1kN/m² respectively.

INSTALLATION TIME

Reduced number of components.

ASSEMBLY

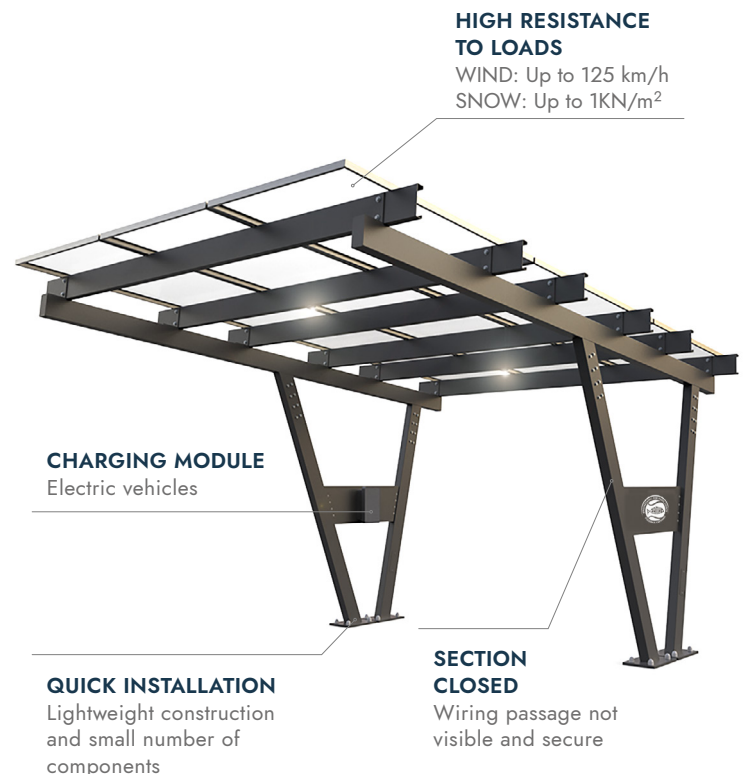
No special aids required for installation. Bolted joints. Easy to handle parts weighing less than 18kg.

MATERIALS

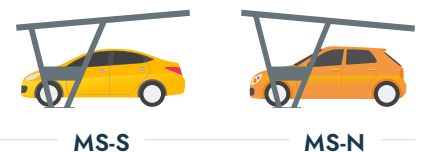
S275JR steel portal and lintel, S350GD ZM310 zing-magnesium alloy steel purlins and 6005 T6 aluminium fixing components.

AVAILABLE COLOURS

Additional protection by means of the thermo-lacquering process, which gives the parts a durable, high-quality finish in a variety of colours. Possibility of powder coating in other colours on request including corporate colour.



Models



Dimensions (mm)

High	Width	Length
2300mm (min) 2500mm (max)	110 - 128	4700 mm*
Distance between posts		Inclination (α)
5000mm (mín)		5

*For a 3V5 arrangement with a panel of dimensions (1780 x 1052 x 40 mm).

Optional accessories

FIXING OF THE MODULES

Fixing of PV panels with anodised aluminium components.

ELECTRIC CAR CHARGER

Possibility of incorporating a charging module for electric vehicles.

LED LIGHTING

LED lighting and wiring (LEDs 5000k x6 pcs).

COLOUR TO CHOOSE**

Possibility of thermo-lacquering in corporate colour and in the colours of the RAL chart. **In case of choosing a non-standard RAL colour (9010; 8007; 6009; 7001); for orders of less than 10 units, an increase per order will be applied.

WATERTIGHTNESS SYSTEM

Channeling system that guarantees the evacuation of water allowing the ventilation of the PV modules and the installation of bifacial solutions.

CUSTOMISATION

The side plate can be customised with a corporate image.

Logistics

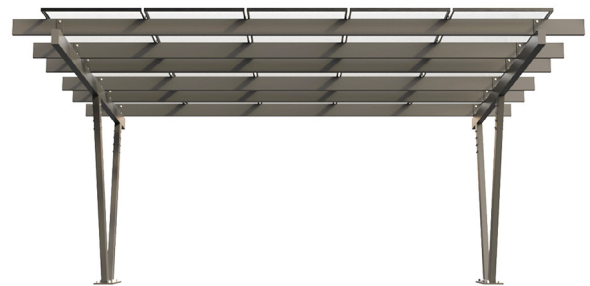
Volume (m³) 1,9 m³

Total weight approx. (kg) 631 kg

Package dimensions (m) 0,8 x 0,46 x 5,3 m

Box dimensions (m) 0,4 x 0,33 x 0,3 m

2 packages - Compact design and low volume packaging.



PATENTED



**MANUFACTURING
EUROPEAN**

